

# COSMETICS TOP PHARMA STATIONERY



# COSMETICS & PERSONAL CARE

*Shower gels, hand creams, towels,  
lip balms, shopping bags...*



**EUROPEAN QUALITY**  
CERTIFIED IN COMPLIANCE  
WITH CE NORMS

**TÜV CERTIFICATES**  
**ISO 22716:2007 y ISO 9001:2008**

AEMPS authorizations: Serial manufacturing of health products. Cosmetic products, toothpastes, hygiene and disinfectants. Clinicscope disinfectants and intact skin antiseptics. Pesticides for personal hygiene.



**NC-007**

**Baby travel kit Boy**

**Content:**

- Hypoallergenic Gel-shampoo. 60ml
- Hypoallergenic Body milk. 3x10ml
- Baby & kid's cologne
- Baby soft sponge
- Rubber duck



**All our products  
are manufactured under  
the strictest GMP's standards**

COSMETICS & PERSONAL CARE

# Travel Kit

3

## School Kit



**NC-069**

**School Kit**

**Content:**

- Hypoallergenic Gel-shampoo. 60ml
- Cologne. 10ml
- Junior toothpaste. 15ml
- Toothbrush
- Towel. 30x30cm
- Cup
- Hair brush



**NC-008**



**Baby travel kit Girl**

**WITH OUR TRAVEL KITS,  
WE ARE SURE OF HAVING  
EVERYTHING NEEDED ON  
HAND IN A SMALL PACKAGE  
AND AVIATION APPROVED**



**NC-063**

**Adventure Kit**

**Content:**

- Sunscreen SPF50. 60ml
- After Sun roll-on. 30ml
- Stop mosquitos roll-on. 30ml
- Junior toothpaste. 15ml
- Toothbrush
- Hair brush
- Flashlight





**NC-005**

Exfoliant kit

**Content:**

- Exfoliant gel. 60ml
- Micellar face lotion. 10ml
- Dry oil with glitters. 15ml
- Body exfoliating sponge
- Face exfoliating sponge

  
**VERT**  
lemon



**NC-001**

Luxe travel kit for her

**Content:**

- Peony shower gel. 60ml
- Peony gentle shampoo. 60ml
- Peony nourishing conditioner. 60ml
- Peony body milk. 2x10ml
- Peony deodorant roll-on. 30ml
- Make up remover. 2x2ml
- Toothpaste. 15ml
- Toothbrush
- Shaving razor

## Travel Kit for Her and Him



**NC-003**

Luxe travel kit for him

**Content:**

- Bamboo & Fleur de Lys shower gel. 60ml
- Bamboo & Fleur de Lys shampoo. 60ml
- Bamboo deodorant roll-on. 30ml
- Bamboo shaving gel. 2x10ml
- Toothpaste. 15ml
- Toothbrush
- Shaving razor
- Comb



COSMETICS & PERSONAL CARE

## Travel Kit

4

**NC-006**

Manicure & Pedicure

**Content:**

- Nail polish. 8ml
- Hidrating base coat. 8ml
- Nail drying gel. 8ml
- Wooden stick
- Nail polish remover napkin. 4x2ml
- Nail file & Nail buffer
- Nail tattoos
- Hand cream
- Toes separator





## WET WIPES

Lavander, Alcohol, Anti mosquito, Make up remover, Stain remover, Shoe polish, ...



COSMETICS & PERSONAL CARE

# Sachets & Wipes

5

## SACHETS

Hand cream, Body milk, Bath gel, Shampoo, Hair conditioner, ...

CS-15

Box with 10 sachets or wet wipes



EUROPEAN QUALITY  
CERTIFIED IN COMPLIANCE  
WITH CE NORMS



NC-004

Travel kit complete for him

**Content:**

- Bamboo & Fleur de Lys shower gel. 3x10ml
- Bamboo & Fleur de Lys shampoo. 3x10ml
- Bamboo deodorant towel. 3x2ml
- Bamboo shaving gel. 2x10ml
- Toothpaste. 15ml
- Toothbrush
- Shaving razor
- Comb



NC-002

Travel kit complete for her

**Content:**

- Peony shower gel. 3x10ml
- Peony gentle shampoo. 3x10ml
- Peony nourishing conditioner. 3x10ml
- Peony body milk. 2x10ml
- Peony deodorant towel. 3x2ml
- Make up remover. 2x2ml
- Toothpaste. 15ml
- Toothbrush
- Shaving razor







#### NC-032-V

Spray bottle. 10ml.

Eau de cologne  
Hand lotion  
Micelar lotion  
Sun oil  
Antibacterial lotion



Cream tube. 30ml.

Eau de cologne  
Hand lotion  
Micelar lotion  
Sun oil  
Antibacterial lotion



Spray bottle. 60ml.

Eau de cologne  
Hand lotion  
Micelar lotion  
Sun oil  
Antibacterial lotion



#### NC-033-V

Airless bottle (15ml)

#### NC-009-V

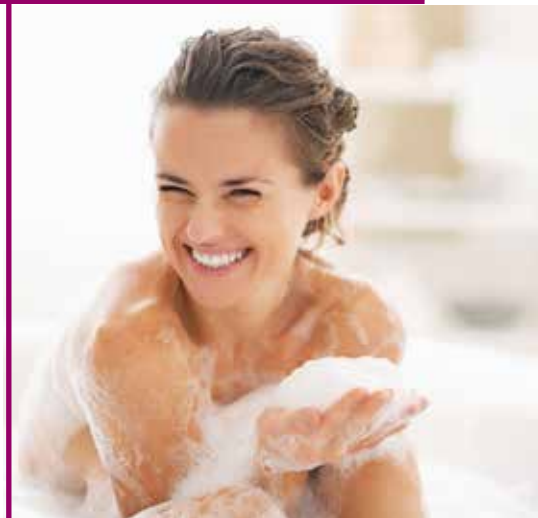
Bottle (60ml)  
Gentle shompoo  
Shower gel  
Hair conditioner  
Body mlk  
Purifying scrub  
Dry body oil  
Sun oil



COSMETICS & PERSONAL CARE

## Soap Packs

6

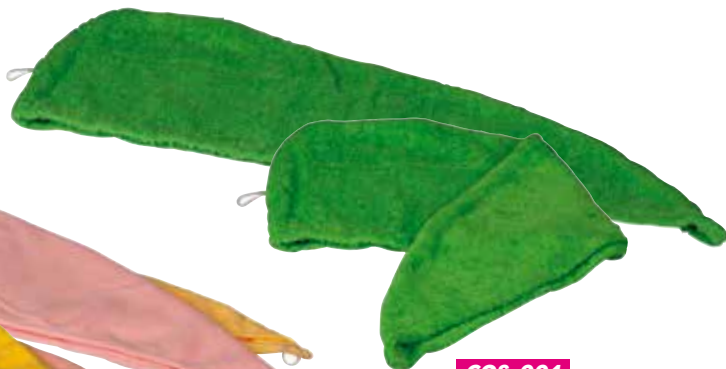




**COS-003**  
Microfiber towel wrap



**COS-004**  
Cotton towel wrap



## COSMETICS & PERSONAL CARE

# Towels

7

**T-90**

100% cotton towel.  
380gr.



**T-30**

100% cotton towel.  
380gr.



**T-50**

100% cotton towel. 380gr.



**COS-0001**

Cotton towel band



**COS-0005**

Lingerie bag



**ZB-100**

Bath slippers. 100% cotton

**MB-70**

Bath mitt





**COS-0018**

Hand Cream.  
150ml.



**ROSEHIP**

HAND CREAM

30ml



**COS-0025**

Hand Cream. 30ml

**COS-0017**

Flavoured soap  
bar. 100gr



**COS-0011**

Cucumber eye pad



**AGC-20**

Hot/cold eye mask  
(pearl effect)



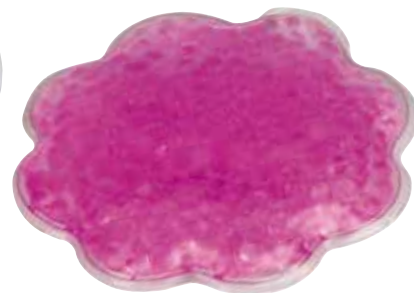
**FCO-110**

Eye cold pack with cover



**COS-0024**

Cold pack (pearl effect)



COSMETICS & PERSONAL CARE

# Health Care

**T-15**

100% cotton towel.  
380gr.



**NC-034**

Scrubbing body pad



**NC-035**

Scrubbing pad







**COS-0026**

Shopping bag



**K-9771**

Recicled shopping bag



**COS-0029**

Shopping bag

COSMETICS & PERSONAL CARE

# Personal Care

9



**COS-0027**

Shopping bag



**COS-0028**

Shopping bag



**K-9147**

Polyester beauty bag

**COS-0002**

Beach pareo towel



**NC-032-4**

Empty beauty bag



**NC-001-4**

Empty beauty bag

**NC-072-4**

Empty beauty bag





**K-3052**  
Pocket mirror



**COS-0010**  
Nail polish.  
4-step buffer



**K-3192**  
Pocket mirror



**COS-0008**  
Fashion lip balm stick



**COS-0009**  
Lip balm stick



**COS-0019**  
Flavoured lip balm. 8gr.



**LD-25**  
Nail file



## COSMETICS & PERSONAL CARE

# Lip Balm

10



**NC-037-V**  
Nail lacquer





# TOP PHARMA

Health Care  
Doctor  
Hospital  
Pharmacist  
Nurse  
Dentist  
First Aid  
Surgeon  
Emergency

*Diagnostic, pediatrics, endocrinology,  
ophthalmology, pharmacy, veterinary,...*



**EUROPEAN QUALITY**  
CERTIFIED IN COMPLIANCE  
WITH CE NORMS

**TÜV CERTIFICATES**  
**ISO 22716:2007 y ISO 9001:2008**

AEMPS authorizations: Serial manufacturing of health products. Cosmetic products, toothpastes, hygiene and disinfectants. Clinicscope disinfectants and intact skin antiseptics. Pesticides for personal hygiene.



**1810**  
4 Monofilament  
spare parts

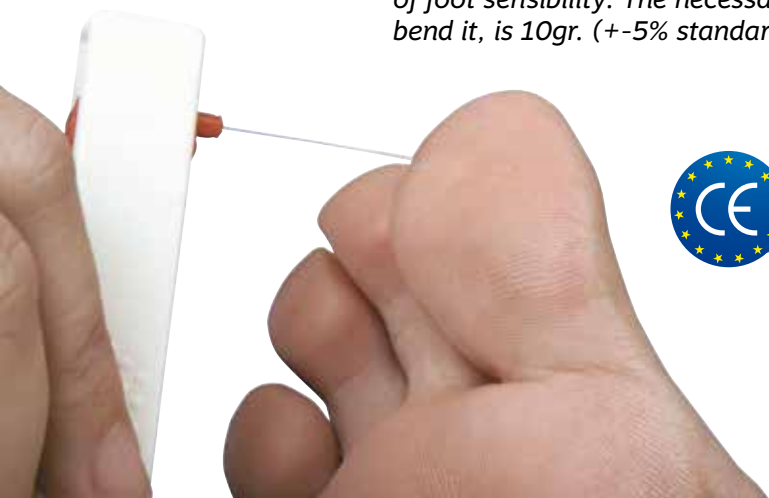


## SENSI TEST. A preliminary diagnosis of sensorial neuropathy in diabetes

### What is a monofilament?

This is a tool that can detect a patient's ability to perceive moderate pressures in peripheral parts of the body and has proven to be predictive for foot ulceration risk. In fact, it is a form or a way of "pre-screening" to test possible functional changes in large sensorial fibres.

The filament of 5.07 has been accepted as the medical standard to show the minimum level of foot sensibility. The necessary pressure to bend it, is 10gr. (+/-5% standard deviation)



**1801**  
Monofilament "Sensi-Test"  
Packaging: flow-pack or carton pouch



TOP PHARMA  
**Monofilament**

12







**ED-35**

Insuline cooler bag  
(4 hours max.)

TOP PHARMA

# Diabetes

13

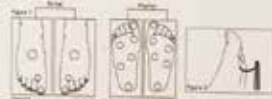
El Monofilamento **SensiTest** puede ser usado para evaluar los niveles de sensibilidad cutáneos. El filamento de 5.07 ha sido aceptado como el estándar médico para mostrar el nivel mínimo de sensación protectora en el pie. La fuerza de presión requerida para doblarlo es de 10 gr (± 5% de desviación estándar).

#### Instrucciones de uso:

- 1.- Explicar el procedimiento al paciente e instruirle para responder a los estímulos.
- 2.- Tomar nota de cualquier área con callos, quemaduras u otro tipo de imperfecciones.
- 3.- Apoyar la extremidad del paciente en una superficie plana y estable. El test debe hacerse en una atmósfera tranquila y el paciente no debe mirar.
- 4.- Para llevar a cabo la revisión en los pies puede realizar el test en las zonas indicadas de la figura 1.
- 5.- Presionar el monofilamento en un ángulo de 90° contra la piel hasta que se doble (figura 2). Mantenerlo en esta posición durante 1.5 segundos y apartarlo. El estímulo se aplica una sola vez y una reacción ya indica positividad.
- 6.- Registrar los resultados usando un círculo para indicar las zonas sensibles y una cruz para indicar la falta de sensación.

**NOTA:** El filamento debe limpiarse con un desinfectante muy suave. Si está doblado o torcido no debe usarse.

CE



**1804**

Monofilament in a  
paper cover



**ED-20**

Insuline cooler bag  
(4 hours max.)





**026**

Obesity tape meter with automatic rewind button.

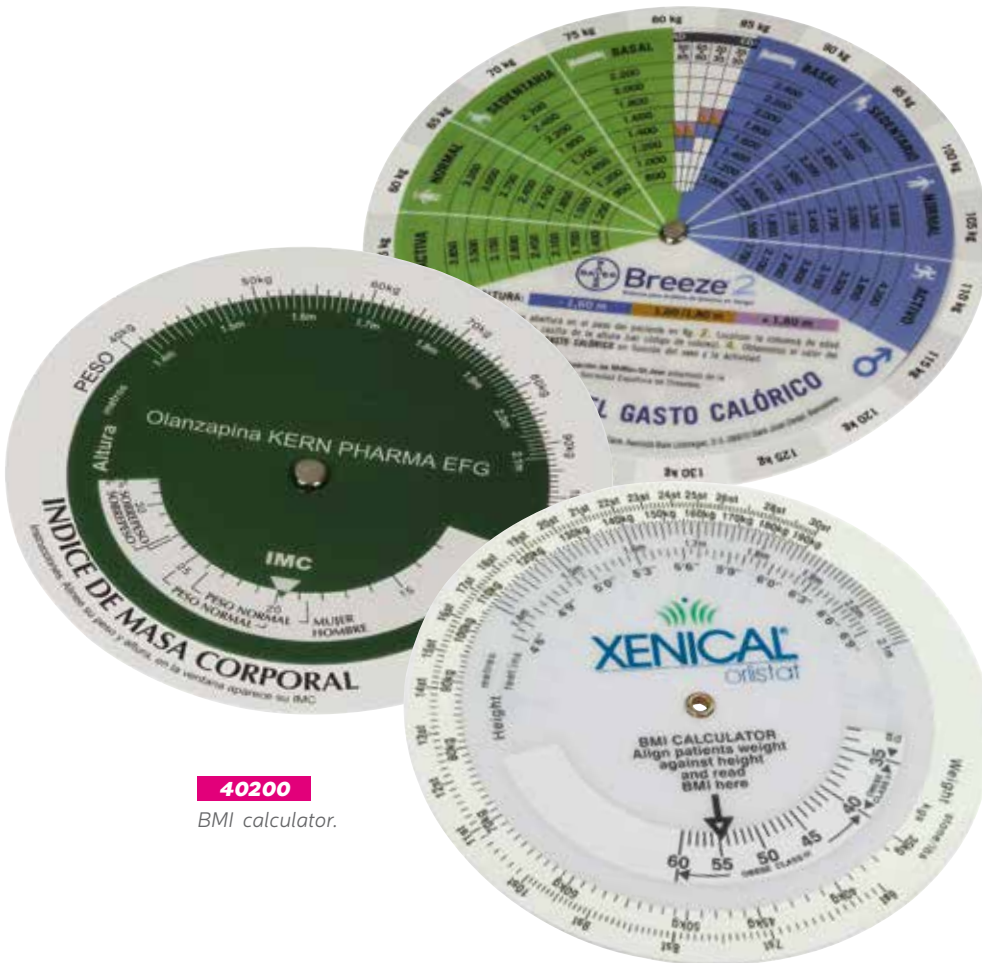
**40100**

Obesity tape meter.  
BMI calculator &  
white tape



## TOP PHARMA **BMI**

14



**40200**

BMI calculator.



**026-BMIC**

Heart shape BMI  
calculator & colored tape

**40120**

BMI calculator & white tape



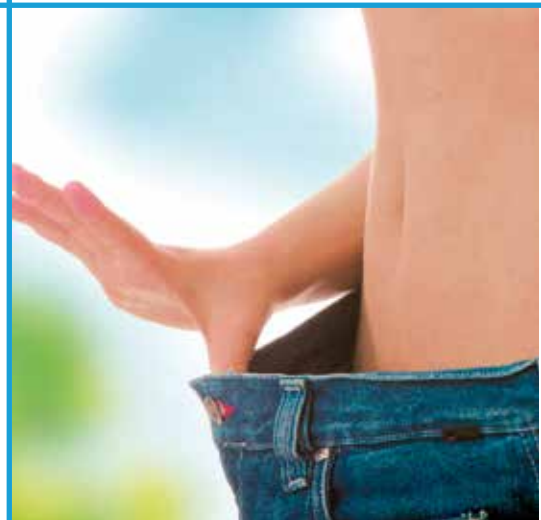
**022**

Heart tape meter with automatic rewind button.



**1901**

Skinfold caliper







**20209**  
Polibag with 20  
heart paper clips



**20505**  
Heart pen pot  
holder



**107**  
Heart risk factor calculator. Gives & indication  
of heart attack risk taking into account blood  
pressure, years of smoking & others factors

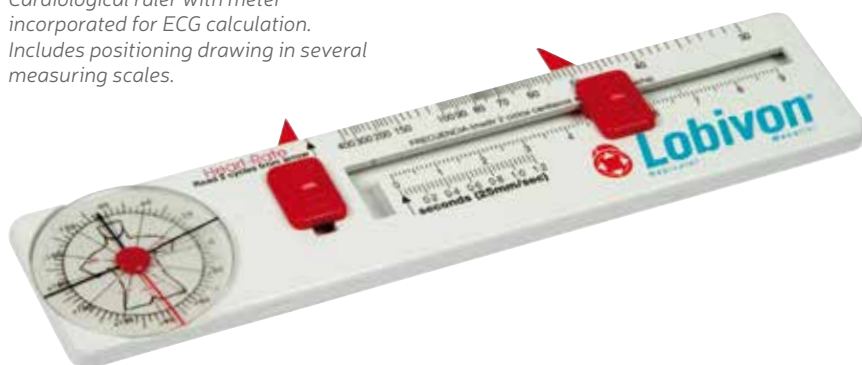
## TOP PHARMA

# Cardiology

15

**795**

Cardiological ruler with meter  
incorporated for ECG calculation.  
Includes positioning drawing in several  
measuring scales.



**IF-35**

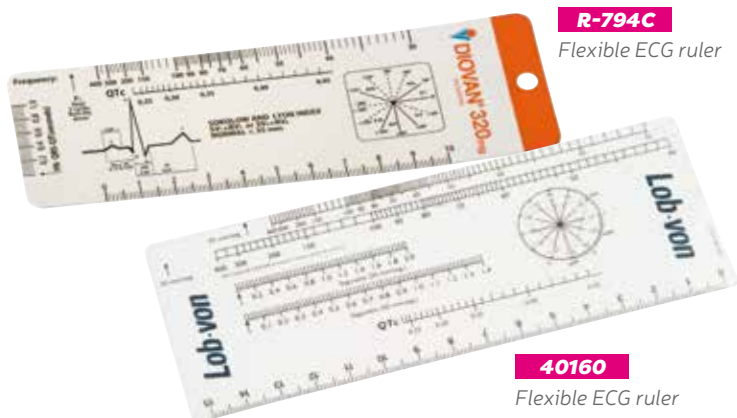
Heart shape  
stethoscope identifier



**798**  
ECG caliper with clip



**SP-25**  
Stethoscope  
support



**R-794C**  
Flexible ECG ruler

**40160**  
Flexible ECG ruler

**115**  
Caliper & measure of coronary risk. Porcen-  
tage probability of a coronary attack winthin 10  
years. Based on the updated information of the  
coronary risk profile taken from the Framingham  
study.





**IF-30**  
Stethoscope identifier



The stethoscope cover is used especially by pediatrics: Contact with the child's skin is less cold. More hygienic.



**CD-255**  
Dispenser box with 25 stethoscope covers

**20180**  
Polybag with 25 nonwoven stethoscope covers



**PF-200**  
Disposable stethoscope protector (single use)

# TOP PHARMA Stethoscope

16



**HS-30A**  
Nurse stethoscope



**HS-30B**  
Double head stethoscope







**593-C**

Diagnostic penlight with cobalt filter. Anodized aluminium penlight 2 batteries R-03 included.



**EP-107**

Diagnostic set: Penlight & cobalt filter.



TOP PHARMA

# Penlight Sets

17



**593**

Anodized aluminium diagnostic penlight 2 batteries R-03 included.

**593-D**

Diagnostic penlight with tongue depressor adaptor (without tongue depressor). Anodized aluminium penlight. 2 batteries R-03 included.



**EP-109**

Diagnostic set: Penlight, 5 tongue depressors and tongue depressor adaptor (D-2)



**591**

Oval penlight with tongue depressor adaptor. It can be used with wooden tongue depressors

**590**

Rectangular penlight with tongue depressor adaptor. It can be used with wooden tongue depressors



#### EP-255

Diagnostic set: Penlight, otoscope, 3 speculums, tongue depressor adaptor & cobalt filter

#### CP-104

Frosted pocket set: Penlight, otoscope & 3 speculums



#### EP-104

Diagnostic set: Penlight, otoscope & 3 speculums



#### EP-110

Diagnostic set: Penlight



#### EP-108

Diagnostic set: Penlight, otoscope, 3 speculums & tongue depressor adaptor

#### EP-250

Diagnostic set: Penlight, otoscope & 3 speculums



TOP PHARMA

# Diagnostic

18



#### EP-202

Empty small PVC case.



#### EP-201

Empty PVC case.





**EUROPEAN QUALITY**  
CERTIFIED IN COMPLIANCE  
WITH CE NORMS



TOP PHARMA

# Tongue Depressors

19

**Each reference with special features as:**

Anti-sliding, Special for pediatrics, Ergonomic...

The individual packaging  
Transparent film: Neutral or printed  
White paper film: Neutral or printed  
Combined paper and transparent film.



**D-8**

Wooden depressor.  
150mm



Four assorted designs  
Several colors



**D-6**

Assorted child depressor.  
Special for pediatrics.  
130mm



**D-2**

Standard.  
130x17mm



**D-7**

Anti-sliding



**D-4**

Ergonomic &  
anti-slipping  
145mm

**D-5**

Ergonomic & anti-slipping.  
Special for pediatrics  
125mm



**D-1**

Standard.  
145x17mm



**C-290**

Sliding dispenser box with 20 tongue depressors (130mm)



**503-CD**

Box with 10 tongue depressors.  
Optional: D-1, D-8



**D1-15B**

15 tongue depressors in plastic bag.  
Optional: D-1, D-2, D-4, D-5, D-7, D-8



**D1-F**

15 tongue depressors in plastic pouch. Optional: D-1, D-7, D-8



**D1-15C**

Frosted box with 15 tongue depressors. Optional: D-1



**D1-FS**

20 tongue depressors in plastic pouch. Optional: D-1, D-7, D-8



# Tongue Depressors

TOP PHARMA

20







**EP-270**

Rigid plastic box with 12 tongue depressors. Optional: D-1, D-8

All references are suitable for flavoured or non flavoured plastic tongue depressors



## TOP PHARMA *Tongue Depressors*

21

**418-PD**

Empty capsule.  
Optional: D-1, D-2, D-4, D-6, D-7



**PF-554**

Empty chemist flask  
Optional: D-1, D-2, D-4, D-5 D-6, D-7, D-8



**C-260**

Box with 50 tongue depressors  
Optional: D-1, D-7, D-8

**C-280**

Box with 20 tongue depressors  
Optional: D-1, D-8



**C-270**

Box with 24 tongue depressors  
Optional: D-1, D-8



**CD-250**

Dispenser box with 30 tongue depressors individually packed. Optional: D-1, D-4, D-6, D-8



**ESP-50**

50 speculums in polybag

**C-15**

Box with 28 speculums



**C-10**

Box with 16 speculums



**CDE-50**

Dispenser box with 50 speculums



**108-P**

Flexible pregnancy disk



**108**

Pregnancy disk



# Gynecology & TOP PHARMA Pediatrics

**CD-401**

Box with 20 tongue depressors & 20 speculums



**109**

Desk pregnancy calculator. 25 pages





**CD-15**

Dispenser carton box:  
15 plasters (70x20mm)



**449-10P**

Handy & Refilable PVC case:  
10 plasters (70x20mm)



TOP PHARMA

# Plasters

23

**ST-10**

Small plastic pouch:  
10 plasters (70x20mm)



**ST-20**

Plastic pouch:  
20 plasters (70x20mm)



**EUROPEAN QUALITY**  
CERTIFIED IN COMPLIANCE  
WITH CE NORMS



**TI-300**

**P-801**

Plasters for everyday minor injuries  
Printing in 1 to 4 colours  
Air permeability, Hypoallergenic  
Other sizes on request only.





**445**

Round pill box: 3 Compartments



**446**

Heart pill box: 1 or 2 compartments at your choice



**444**

Square pill box: 4 compartments



**443-2**

Fortnightly pill box:  
14 compartments



**443-4**

Monthly pill box: 28 compartments: 4 weeks



**449**

Empty Pill box



**443**

Weekly pill box:  
7 compartments



**440**

Oval pill box:  
2 Compartments

**443-3**

Daily pill box: 3 Compartments: breakfast, lunch & dinner



**441**

Pill box 4 in 1: Crushes, splits, dual compartments, drinking cup



**442**

Pill box with cutter

TOP PHARMA

# Pill Boxes





**799**  
Finger goniometer



**20310**  
Handy negatoscope

25

# TOP PHARMA Traumatology



**439/439-TR**  
Caliper

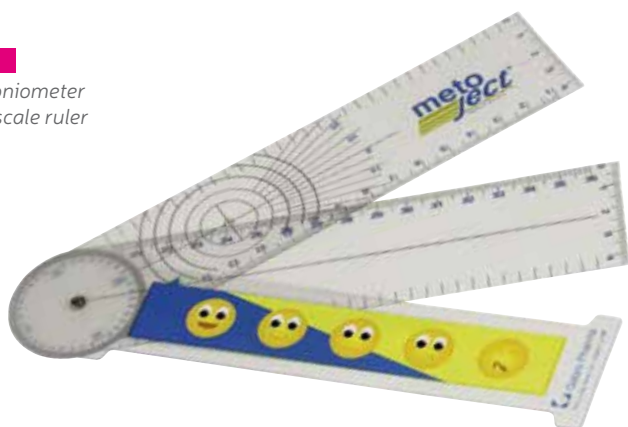


**B-050**  
X-ray chalk holder

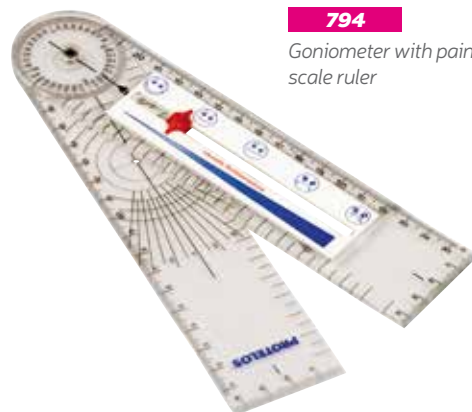


**RC-200**  
X-ray marker

**PH-012**  
X-ray pencil



**793-S**  
Flexible goniometer  
with pain scale ruler



**794**  
Goniometer with pain  
scale ruler

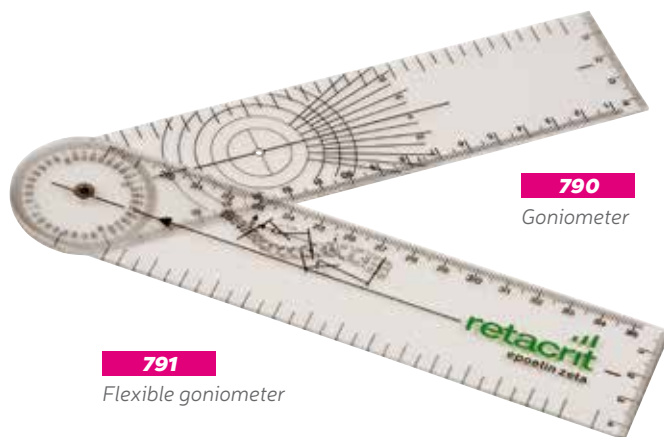
**ES-143**  
"Buck" hammer



**792-S**  
Flexible visual analogue  
pain scale ruler



**788**  
Traumatology goniometer



**791**  
Flexible goniometer



**793**  
Goniometer with  
pain scale ruler



# TOP PHARMA Traumatology

26

**ES-141**  
Diapason



**792**  
Visual analogue pain  
scale ruler



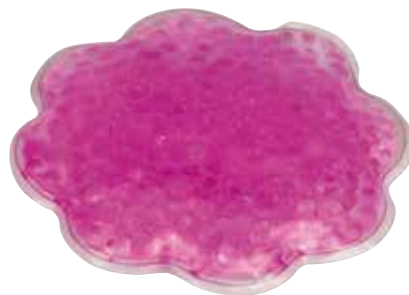


**BK-002**  
Cold/hot pack



**FC-80**  
Hot/cold pack with cover

**COS-0024**  
Hot/cold pack. Pearl effect



**FCC-100**  
Hot/cold pack

**FCC-802**  
Hot/cold pack with cover



**FCC-801**  
Hot/cold pack with cover



**AG-10**  
Hot/cold eye mask.  
Velvet finish



**AGC-20**  
Hot/cold eye mask  
(pearl effect)

# TOP PHARMA Traumatology

27

**FCI-90**  
Cold pack. Bear, frog, penguin, ...



**AGC-201**  
Hot/cold pack. Pearl effect



**ESG-200**  
Hammer with caliper



**14601**  
Extensible "Queen" hammer with screwing head



**GC-20F**  
Surgical cap for women



**GC-20M**  
Surgical cap for men



**ES-145**  
"Taylor" hammer



**UM-65**  
Surgical top



# TOP PHARMA Traumatology

28



**ET-9000L**  
Lister scissor



**617**  
Bandage scissors





**035**  
Cranometer



**BT-101**  
Rectangular bib.  
Laminated

**BT-103**  
Oval bib.

**BT-102**  
Round bib. Laminated

TOP PHARMA

**Baby**

29



**027**  
Baby meter with head  
& feet support



**NC-051/6**  
Pink bath esponge

**NC-051/2**  
Blue bath esponge



**626-1**  
Digital flexible hermometer



**PBT-400**  
Baby scale protector.  
Baby changer



**BK-012**  
Maxi glass with 3D  
lenticular printing



**K-3097**  
Backpack polyester 190T



**BK-011**  
Puzzles & magnetic  
games



**028**

Kid meter with head support.  
Adhesive for hanging on the  
wall included.



TOP PHARMA

**Junior**

30



**PL-300**  
Flea comb. Is used to  
remove lice and fleas



**438-I**  
Ball game, 6 balls



**K-3392**  
Magnetic game





**417-BB**  
Child's design  
tourniquet



**417**  
Tourniquet with  
buckle fastening



## TOP PHARMA *Nursing*

31



**93101**  
Adhesive paper tape



**114**  
Nylon pocket protector



**112**  
Pocket protector



**40530**  
Box with 10 sterile  
gauzes packs



**620**  
Needle collector



**40520**  
Injection pad  
with strap



**626**  
Digital flexible  
thermometer



**305-F**

5 pairs schirmer test

**EG-16**

Ophthalmology case: sterile gauze pad (1pcs), eye patch, sunglasses



32

# TOP PHARMA Ophthalmology

**180**

Ophthalmologic ruler



**140**

Ophthalmologic ruler



**R-170F**

Ophthalmologic ruler



**447-H**

Eye occluder



**PG-15**

Top desk sunglasses holder



**P-800**

Eye patch



**593-C**

Diagnostic penlight with cobalt filter. Anodized aluminium pen-light. 2 batteries R-03 included.







**447-S**  
Eye occluder



**PH-013**  
Ophthalmologic ruler



**438-ES**  
Eye ball game. 6 balls



**PH-006**  
Glases marker



**447**  
Eye occluder



# TOP PHARMA Ophthalmology

33



**120**  
Ophthalmologic ruler



**120-S**  
Flexible ophthalmologic ruler



**RD-200**  
Dermatologic marker



**PH-007**  
Dermatologic ruler



**RD-120**  
Dermatologic ruler



**40140**  
Dermatologic ruler



# TOP PHARMA Dermatology

34



**R-150D**  
Dermatologic ruler



**PH-022**  
Dermatologic ruler





**40250-P**  
PEF calculator disk



# TOP PHARMA *Dentist & Spirometry*

35

**20213**

Polybag with 20 lung paper clips



**437**

Lung ball game.  
6 balls



**ESP-100**

Nasal speculum



**113**

Caliper and measurement lung function (PEF)



**102**

Small dentist mirror



**20215**

Polybag with 20 tooth paper clips





**STT-003**

Adhesive tape dispenser



**436-F**

Pharmacy cutter



**436**

Cutter with security cover

TOP PHARMA

# Pharmacy

36

**PH-16**

Coin tray



**PH-023**

Counter protector



**112**

Pocket protector



**PH-018**

adhesive floor





**PH-015**

Veterinary antistress



**GC-20M**

Surgical cap for men



**422-THU**

Bone marker



**470-BHU**

Bone ball pen



**UM-65**

Surgical top



**20205**

Bone paper clip holder



**T-50**

100% Cotton towel.  
380gr



**K-9048**

Polar blanket

TOP PHARMA

**Veterinary**

**CP-228**

Pocket carton box  
with 10 tissues



**CP-225**

Frosted plastic tissue pocket  
box (10 tissues)



**Soft tissues boxes (2  
plies). Boxes of latex,  
vinyl or nitrile gloves.  
Boxes with face masks.**

38

## TOP PHARMA *Tissues & Gloves*



**1375-GL**

Triangular carton box with 25 gloves



**1375**

Triangular carton box with  
30 tissues

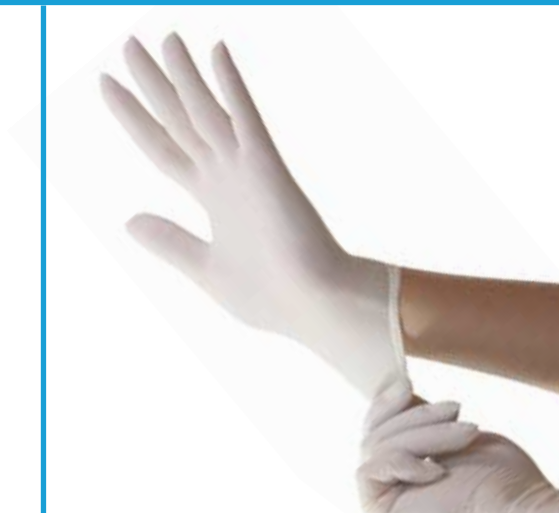


**10400**

Rectangular carton box  
with 10 gloves

**10200**

Rectangular carton  
box with 25 tissues



**CK-400**

Nose carton box with 50 tissues



**CK-404GL**

Carton box with 15 gloves

**10350-GP**

Carton box with  
tissues & gloves







**1380**

Hexagonal carton box with 50 tissues



**10250**

Hexagonal carton box with 50 tissues

**10350**

Hexagonal carton box with 18 gloves



**1385**

Rectangular carton box with 50 tissues

**1320**

Square carton box with 50 tissues



**1386-GL**

Square carton box with 25 gloves



**1386-PP**

Square carton box with 50 tissues



**PP-1300GL**

Pyramidal carton box with 50 tissues & 12 gloves

# TOP PHARMA Tissues & Gloves

39

**CK-404**

Rectangular carton box with 50 tissues



**CK-402**

Rectangular carton box with 50 tissues



**EUROPEAN QUALITY**  
CERTIFIED IN COMPLIANCE  
WITH CE NORM



**DB-735**

Bottle with antibacterial  
gel. Capacity: 125ml



**Dermatologically tested. Hand  
cream, Hair treatment, Shower gel,  
shampoo, Body milk, ...**

TOP PHARMA

# Soap & Cream

40



**DJ-750**

Syringe soap dispenser with soap.  
Capacity: 450ml.



**DP-716**

**DP-715 (Empty)**  
Aspirin soap dis-  
penser with soap.  
Capacity: 200ml.



**DJ-418**

Capsule soap dis-  
penser with soap.  
Capacity: 150ml.



**DB-100**

Bottle with antibacterial  
gel Capacity: 100ml



**DB-740**

Bottle soap dispenser.  
Capacity: 150ml



**DB-740A**

Dispenser bottle with  
antibacterial gel. Capa-  
city: 150ml

**CS-15**

Box with 10 sachets  
or wet wipes



**CS-10**

Box with 5 sachets  
or wet wipes

**CD-200**

Dispenser box with 10 sa-  
chets or wet wipes





**EN-320**

Mini first aid kit: 2 bandages, pair latex gloves, 1 scissors, 2 plasters, gauze pad, 2 alcohol wipes.

**BB-328**

First aid Kit. Contain: bandage (2pcs), latex gloves (pair), scissors, tweezers, adhesive tape, plasters (10pcs), alcohol napkin (3pcs), soap napkin (3pcs), gauze pad

**BB-328**

Outdoor first aid kit: 4 plasters, 2 soap napkin, 2 alcohol napkin, scissors, tweezers, latex tourniquet, 1 gauze pad, adhesive tape, latex gloves, CPR mask

**EN-300**

Mini first aid kit: 2 bandages, pair latex gloves, 1 scissors, adhesive tape, gauze pad, 3 alcohol wipe.

**BB-327**

Micro first aid kit: bandages, 2 hydrochlorite of sodium, 2 soap napkins, 4 plasters, gauze pad, 2 alcohol napkins.

**1506**

CPR mask



**Make your First Aid Kit at your convenience. Choose your packaging.**



TOP PHARMA

# First Aid Kit

41

**BB-326**

Premier first aid kit: 6 plasters, 2 soap napkin, 2 alcohol napkin, scissors, tweezers, latex tourniquet, 2 gauze pad, adhesive tape, latex gloves, CPR mask, 2 NaCl, cold pack

**EP-317**

Pocket kit: 2 soap napkins, 4 plasters, gauze pad, 2 alcohol napkins.





Kidney base



Eye base



Lung base



Eye base



Knee base



TOOTH PHARMA

# Anatomy

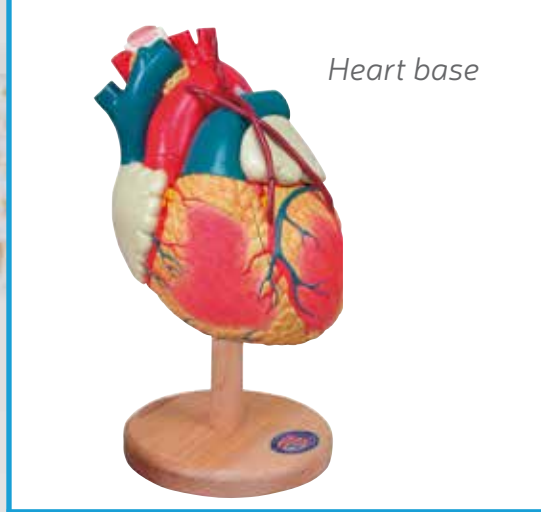
43

**Cardiovascular system,  
Respiratory system,  
Urinary system, Diabetes  
demostration model  
Eye model, Teeth model,  
Skin model, Ear model,...**

Tooth base







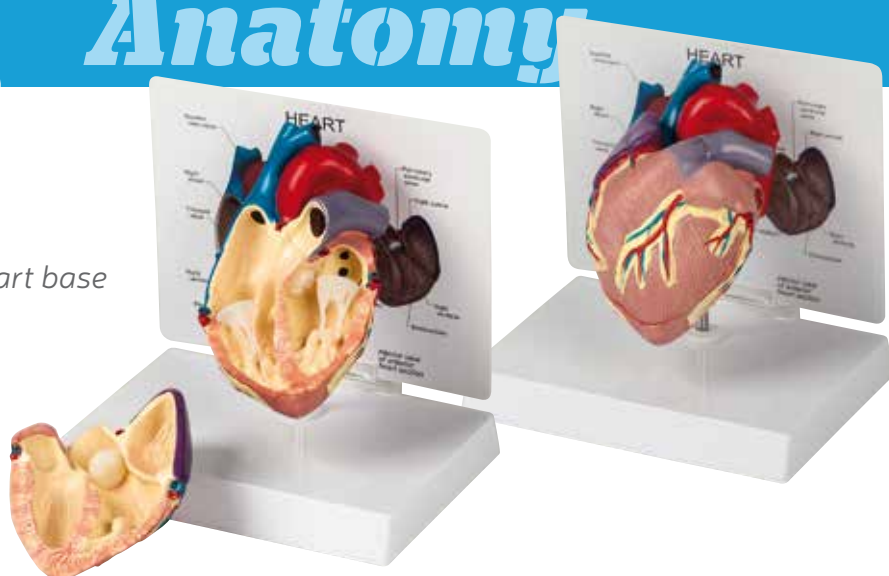
Heart base

TOP PHARMA

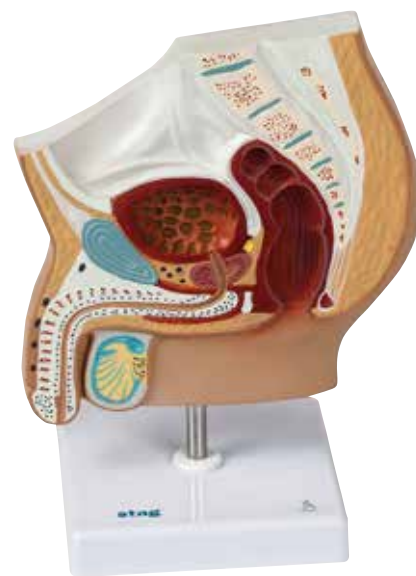
# Anatomy

44

Heart base



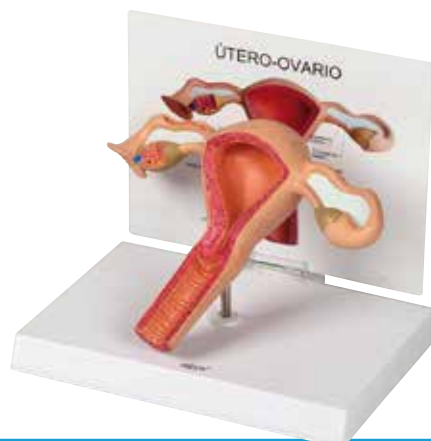
Male pelvis



Knee base



Female Uterus



3D Head

